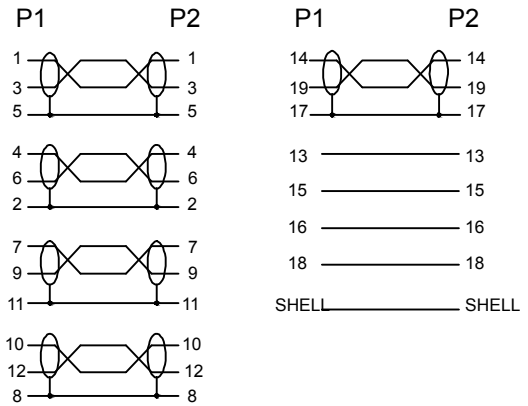


Cable Flag
Size: 70*15mm

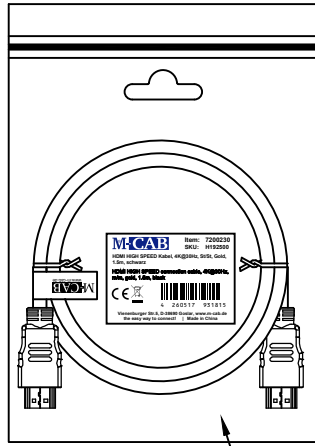
PIN OUT



MODEL LIST

MODEL	LENGTH
7200230	1500±20mm
7200232	1000±20mm
7200235	2500±30mm
7200231	2000±20mm
7200233	3000±20mm

PACKING DRAW



NOTES:

- Electrical properties:
- 100% open and short test.
 - Support resolution up to 4K*2K/30Hz.
 - Conductor resistance: 3 OHMS.
 - Insulation resistance: 10M OHMS.

ROHS 2.0 and REACH compliant.

MATERIAL LIST

⑦	PACKAGE	PE ZIP BAG+BARCODE STICKER	1							
⑥	PRINTING	HIGH SPEED HDMI CABLE WITH ETHERNET								
⑤	CABLE	(1/0.25BC*1P+1/0.25BC+AL)*5PCS+1/0.25BC*4C+AL+1/0.25BC+80/0.12ALMG+PVC, OD: 6.0±0.2MM, COLOR: BLACK	L							
④	MOLD HOOD	BLACK PVC	1	DRAW No.		NAME	HDMI1.4 CABLE, 30AWG			
③	MOLD HOOD	BLACK PVC	1	CUSTOMER	M-CAB		MAPE	TOLERANCE		
②	CONNECTOR	HDMI A MALE, GOLD PLATED PIN, GOLD PLATED SHELL	1	MODEL No.	SEE MODEL LIST			X.	±1.00	
①	CONNECTOR	HDMI A MALE, GOLD PLATED PIN, GOLD PLATED SHELL	1	APPROVE BY		CHECK BY	DRAW BY	SCALE	MM	
No.	PART NAME	DESCRIPTION	QTY						PAGE	1/1