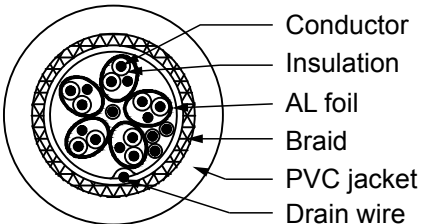
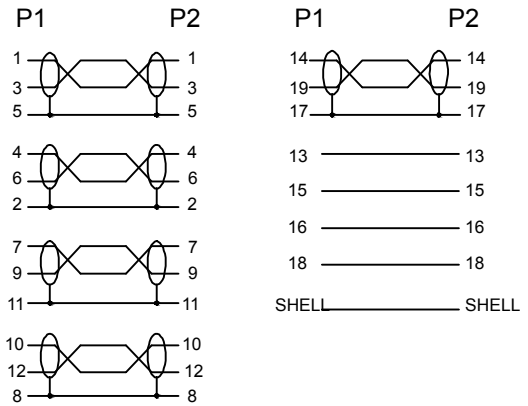


Cable Flag  
Size: 70\*15mm



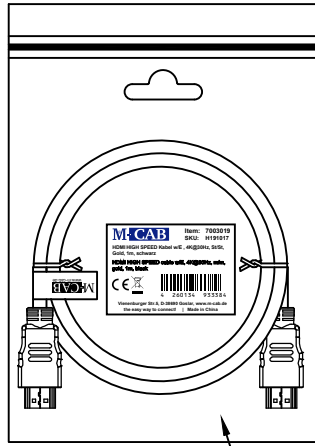
PIN OUT



MODEL LIST

MODEL	LENGTH
7003019	1000±20mm
7003020	2000±20mm
7003021	3000±30mm
7003022	5000±50mm

PACKING DRAW



NOTES:

- Electrical properties:
- 100% open and short test.
  - Support resolution up to 4K\*2K/30Hz.
  - Conductor resistance: 3 OHMS.
  - Insulation resistance: 10M OHMS.

ROHS 2.0 and REACH compliant.

MATERIAL LIST

⑦	PACKAGE	PE ZIP BAG+BARCODE STICKER	1
⑥	PRINTING	HIGH SPEED HDMI CABLE WITH ETHERNET	
⑤	CABLE	(1/0.25BC*1P+1/0.25BC+AL)*5PCS+1/0.25BC*4C+AL+1/0.25BC+80/0.12ALMG+PVC, OD: 6.0±0.2MM, COLOR: BLACK	L
④	MOLD HOOD	BLACK PVC	1
③	MOLD HOOD	BLACK PVC	1
②	CONNECTOR	HDMI A MALE, GOLD PLATED PIN, GOLD PLATED SHELL	1
①	CONNECTOR	HDMI A MALE, GOLD PLATED PIN, GOLD PLATED SHELL	1
No.	PART NAME	DESCRIPTION	QTY

DRAW No.		NAME	HDMI1.4 CABLE w/ETHERNET, 30AWG	
CUSTOMER	M-CAB		MAPE	TOLERANCE
MODEL No.	SEE MODEL LIST			X. ±1.00 X.X ±0.50
APPROVE BY	CHECK BY	DRAW BY	SCALE	MM
			PAGE	1/1